



Technical Bulletin
Rev. 1/1/11

Glazing Requirements for Vertically Glazed Polysulfide Insulating Units

Vitro America requires that our **polysulfide insulating glass units** be installed in accordance with the recommendations of this Technical Bulletin as part of the terms of our warranty. In addition, the glazing principles set forth in the Insulating Glass Manufacturers' Alliance (IGMA) North American Glazing Guidelines for Sealed Insulating Glass for Commercial and Residential Use and the Glass Association of North America (GANA) *Glazing Manual* should be followed.

- **All insulating units must be set on setting blocks**
- **The framing system must be “weeped” to the exterior**
- **Centering shims must be used with wet sealants**
- **The insulating unit sealant must be protected from direct exposure to sunlight.**
- **The framing system must have a maximum deflection of L / 175.**
- **The glazing pocket on wood windows or doors must be painted, stained or sealed and be completely dry and cured before glazing Vitro insulating units.**

Copies of the IGMA booklet North American Glazing Guidelines for Sealed Insulating Glass for Commercial and Residential Use TM-3000 (04) are available from:

Insulating Glass Manufacturers Alliance
1500 Bank Street, Suite 300
Ottawa, ON K1H 1B8
Canada

Copies of the GANA *Glazing Manual* are available from:

Glass Association of North America
800 SW Jackson Street, Suite 1500
Topeka, KS 66612-1200

Please note that Vitro America **does not warrant glass against breakage from any cause**. Vitro America's warranty on insulating units covers seal failure only. Vitro America will assist our customers in determining the potential for thermal stress or windload breakage, but glass breakage must be handled as a matter of statistical probability.



Technical Bulletin

Glazing Requirements for Vertical Insulating Units

Warranty Requirements for Vertically Glazed Insulating Units

Maximum Unit Size: 84 X 144
not to exceed 60 square feet for CFP units
not to exceed 50 square feet for non-CFP units

	<u>Max. Area</u>
Any Spacer, 2.5 mm glass	12 Sq. Ft.
3/16", 1/4" Spacer, 3.0 mm thru 6.0 mm glass	20 Sq. Ft.
5/16", 3/8" Spacer, 3.0 mm glass	20 Sq. Ft.
4.0 mm thru 6.0 mm glass	35 Sq. Ft.
7/16" to 3/4" Spacer, 3.0 mm glass	20 Sq. Ft.
4.0 mm and 5.0 mm glass	35 Sq. Ft.
6.0 mm glass	50 Sq. Ft. (non-CFP units) 60 Sq. Ft. (CFP units)

Weep Holes

Three weep holes must be provided for each insulating unit. Each weep hole must be equal in area to a 3/8" diameter hole. One weep hole must be located between the setting blocks and the other two weep holes must be located between the setting blocks and the adjacent mullions. Alternative weep systems must be approved in advance.

Setting Blocks

Setting blocks must be located at the 1/4 points of the insulating unit. Setting blocks must be at least as wide as the insulating unit, at least as high as the minimum edge clearance and 0.1" in length for each square foot of glass area with a minimum length of 4" (2" for 1/2" units made with 2.5 mm or 3.0 mm glass and having an area of less than 12 sq. ft.). Setting blocks must be made of a resilient material such as Neoprene, Santoprene, EPDM or extruded silicone. Setting blocks must be 80 - 90 Durometer, Shore A, in hardness, and meet the requirements of ASTM C 864 *Standard Specification for Dense Elastomeric Compression Seal Gaskets, Setting Blocks and Spacers*.

Shims

Resilient shims made of a material such as Neoprene, Santoprene, EPDM or extruded silicone that have a hardness of 40 - 60 Durometer, Shore A, must be used with gun-able sealants or butyl tapes. Dry glazed systems will be deemed suitable if glazed with Neoprene, Santoprene, EPDM or extruded silicone glazing gaskets supplied by the system manufacturer.

Sealants

Compatibility testing should be done by the supplier of the waterproofing sealant. It must be certified compatible with FENZI Thiover Two-Component Polysulphide Sealant for Insulating Glass. A signed letter from the sealant manufacturer should be kept in the job file to confirm sealant compatibility.



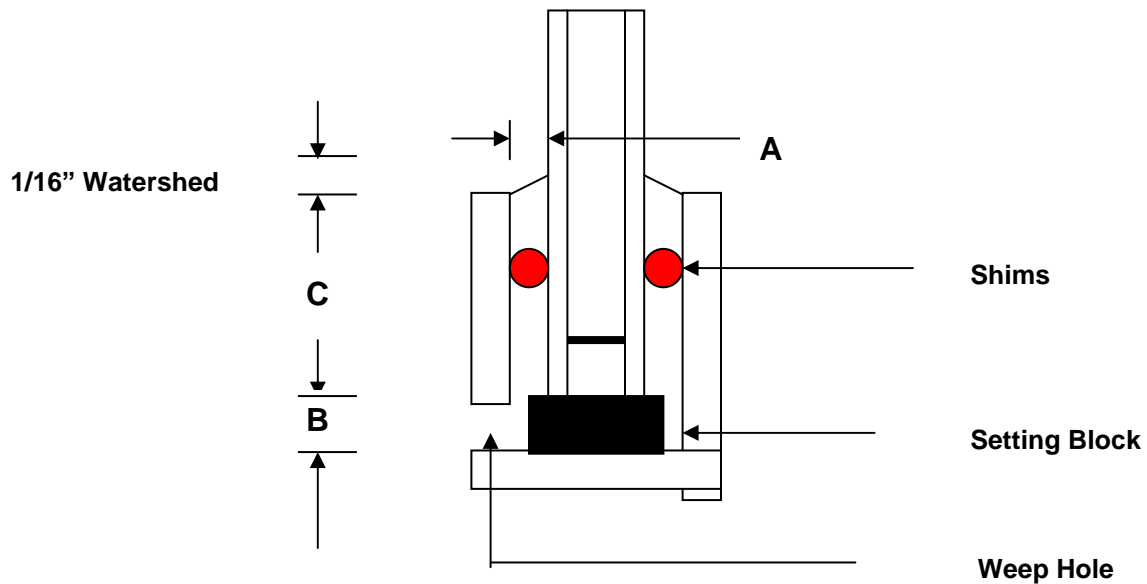
Technical Bulletin

Glazing Requirements for Vertical Insulating Units

Glazing Pocket Clearance

Unit Type	<u>Minimum Clearance</u>		
	A = Face	B = Edge	C = Bite
3/16" – 1/4" Air Space, 2.5 - 4.0 mm glass	1/8"	1/8"	1/2"
All other combinations	3/16"	1/4"	1/2"

Required Glass Bite and Edge and Face Clearances for Vertical Insulating Glass Units



A = Face Clearance
B = Edge Clearance
C = Bite



Technical Bulletin

Glazing Requirements for Vertical Insulating Units