

SLOPE SEALANT TO DIRECT DRAINAGE BETWEEN PRESSURE BAR AND FACE CAP (USE BACKER ROD AS REQUIRED)

PRESSURE BAR SPLICE

4"

2"

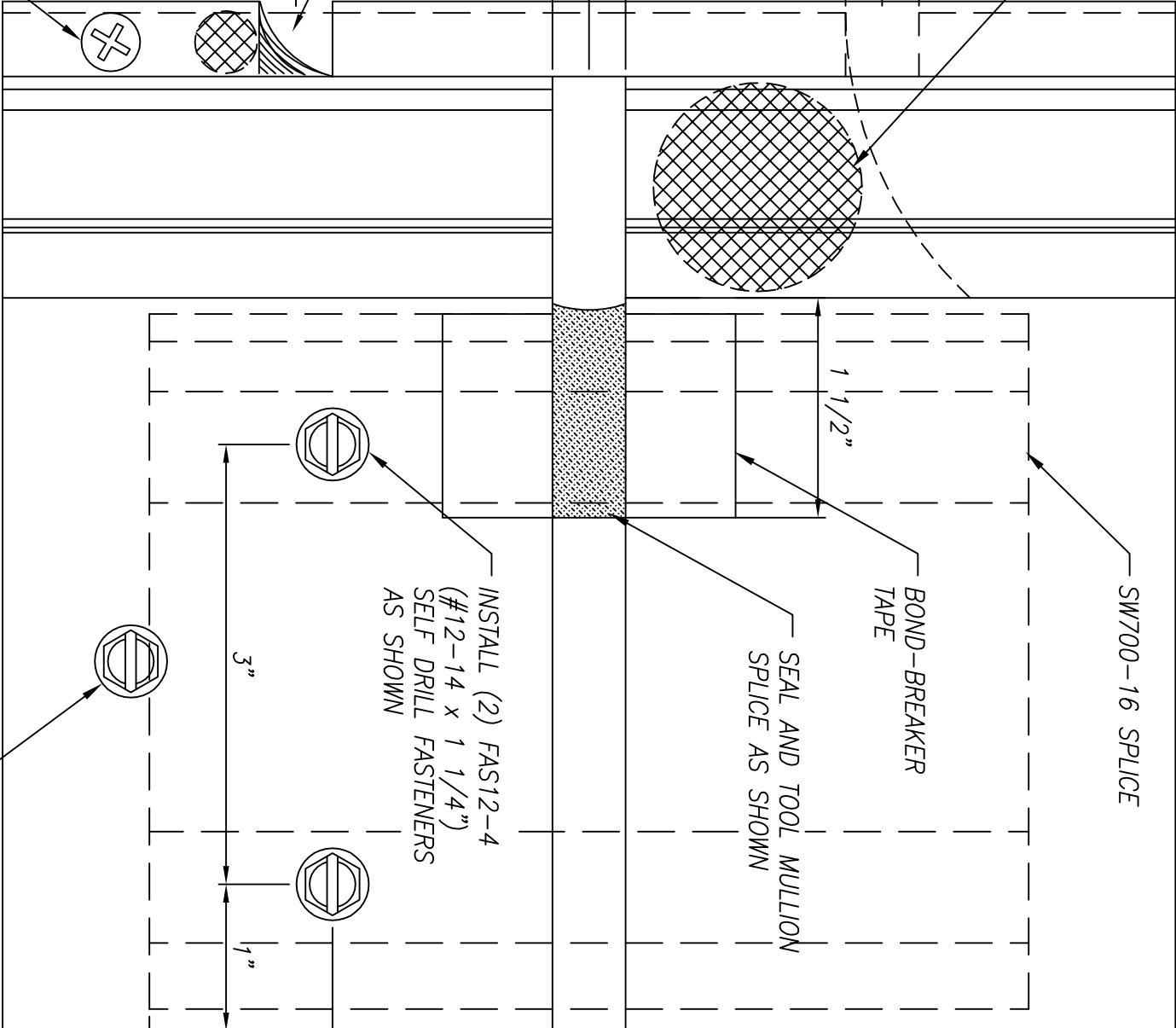
1/2" MIN.

1/2" MIN.

1/2" MIN.

SEAL COVER JOINT AS SHOWN (USE BACKER ROD AS REQUIRED)

REFERENCE INSTALLATION INSTRUCTIONS FOR LOCATION OF FASTENER ON FACE COVER AT SPLICES



SW700-16 SPLICE

BOND-BREAKER TAPE

SEAL AND TOOL MULLION SPLICE AS SHOWN

INSTALL (2) FAST12-4 (#12-14 x 1 1/4") SELF DRILL FASTENERS AS SHOWN

3"

1"

1 1/2"

2 3/4"

FAST12-4 STOP SCREW (REMOVE AFTER INSTALLATION)